

Navigation Data Download Procedure for Eclipse 500 NG System

Application: This procedure applies to EA500 aircraft equipped with Avio NG (IS&S) EFIS but without the Garmin G400Ws.

Note: This procedure was formulated using a Personal Computer with Windows XP operating system.

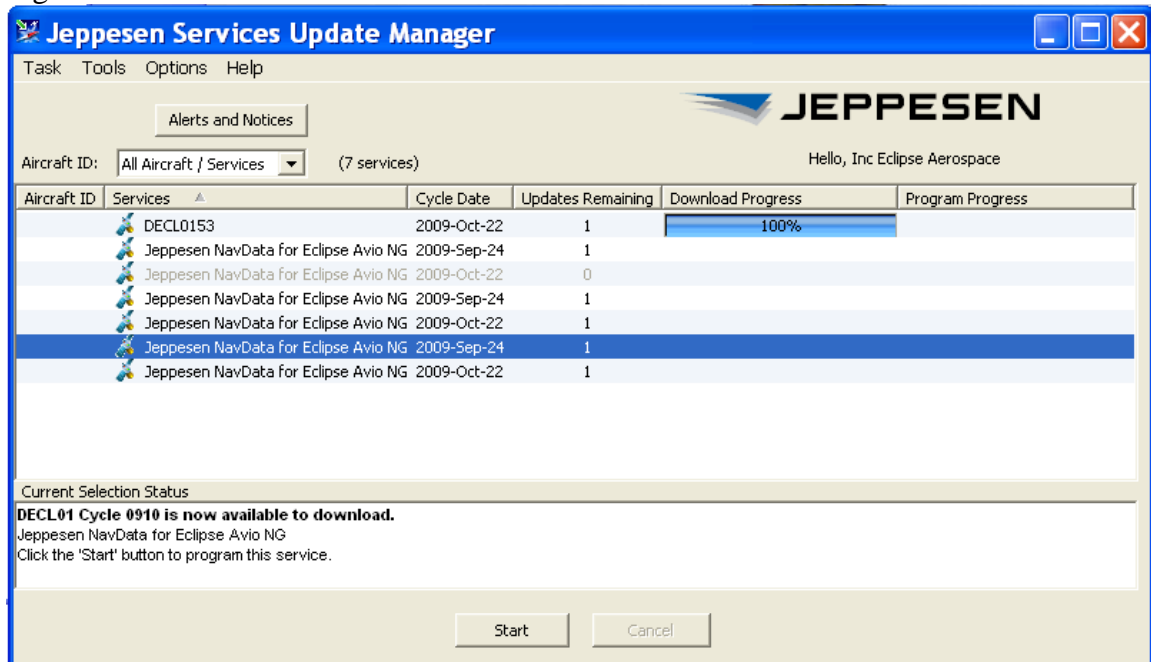
- 1) USB drive preparation:
 - a. Insert USB drive into PC that is connected to the Internet
 - b. Note drive letter that your PC assigns to the USB drive
 - c. Remove all files and folders from the USB drive
- 2) Jeppesen Services Update Manager (JSUM) Account Login (see Figure 1)
If you do not have a Jeppesen account contact Jeppesen (www.jeppesen.com)
 - a. Go to Jeppesen Services
 - b. Enter Username and Password
 - c. Select "OK"
- 3) NavData File Selection: (see Figure 2)
 - a. Select item for download
 - b. Select "Start"
- 4) Loading file to USB Drive: (see Figure 3)
 - a. Select "Download and Program Now"
 - b. Select "Browse" button and browse to the USB drive.
 - c. Select "OK"
Path will appear in window (see Figure 4)
 - d. Select "Continue"
 - e. Observe download status in "Current Selection Status" window.
- 5) Successful Download Confirmation
 - a. Confirm Status Message appears indicating:
"...service has been programmed successfully." (see Figure 5)
 - b. Select "OK"
 - c. Browse to USB drive and confirm that the file "NAVAID_DB.F01 is present within the folder structure: "D:\AVIO\FMS" (see Figure 6)
Note: "D" will vary based on the drive designation assigned by your PC when the USB drive was inserted.
 - d. Close JSUM : Select X in upper, right corner of window
- 6) USB Drive Removal
 - a. Close the USB drive window
 - b. Use the "Safely Remove Hardware" function on your PC to stop the USB drive for safe removal.
 - c. Observe Pop-Up: "Safe To Remove Hardware"
 - d. Physically remove the USB drive from the PC
- 7) Aircraft Installation:
Take the USB drive to your aircraft and use it to update the NG Navigation Data as described in the AFM, Section 8, "NAVIGATION DATABASE UPDATE"

Navigation Data Download Procedure for Eclipse 500 NG System

Figure 1: JSUM Login Screen



Figure 2: NavData Selection screen



Navigation Data Download Procedure for Eclipse 500 NG System

Figure 3: Load Option Screen

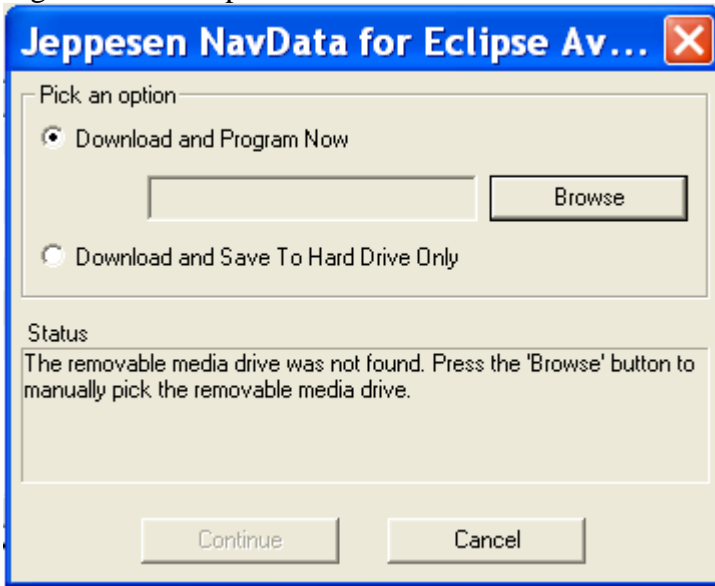
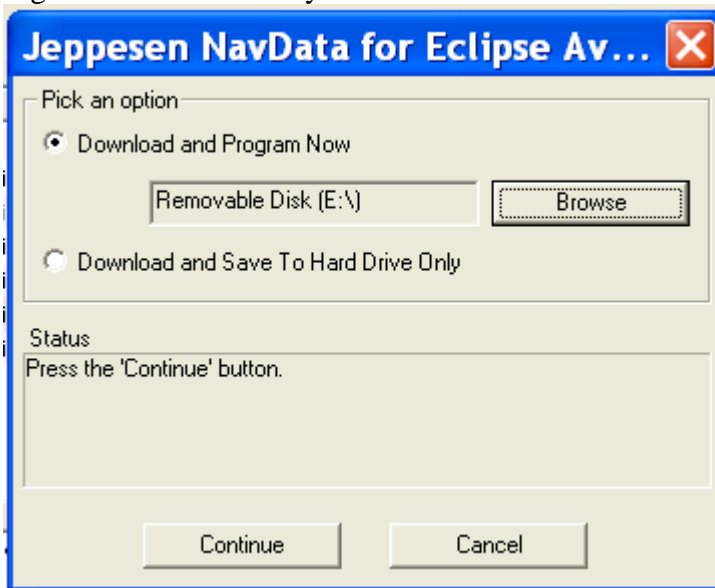


Figure 4: NavData ready to load to USB



Navigation Data Download Procedure for Eclipse 500 NG System

Figure 5: USB Transfer Successful



Figure 6: USB Drive Confirmation

